

# 21<sup>st</sup> Century Houses

## Downunder

DOMINIQUE



images  
Publishing

Edited by Mark Cleary

# Turramurra House

**Turramurra, NSW, Australia**  
Cullinan Ivanov Partnership  
Photography: Charmaine Pang

The original house had been 'renovated' badly by the previous owner. The existing stair made circulation in the house very awkward, its location creating a large area of 'dead' space. The existing windows and walls limited both solar access to the space and blocked desired views.

The resulting renovation introduces a new stair and bathroom, a new kitchen/laundry to the north and three steel boxes, which punch through the southern wall to provide a connection to the existing trees and landscape. The steel boxes, constructed with 10-millimetre mild steel sheets measure 2.4 metres high by 2 metres wide by 1.2

metres deep. They contain a series of joinery units, which are painted in a fluorescent green to further enhance the connection with the outside vegetation.

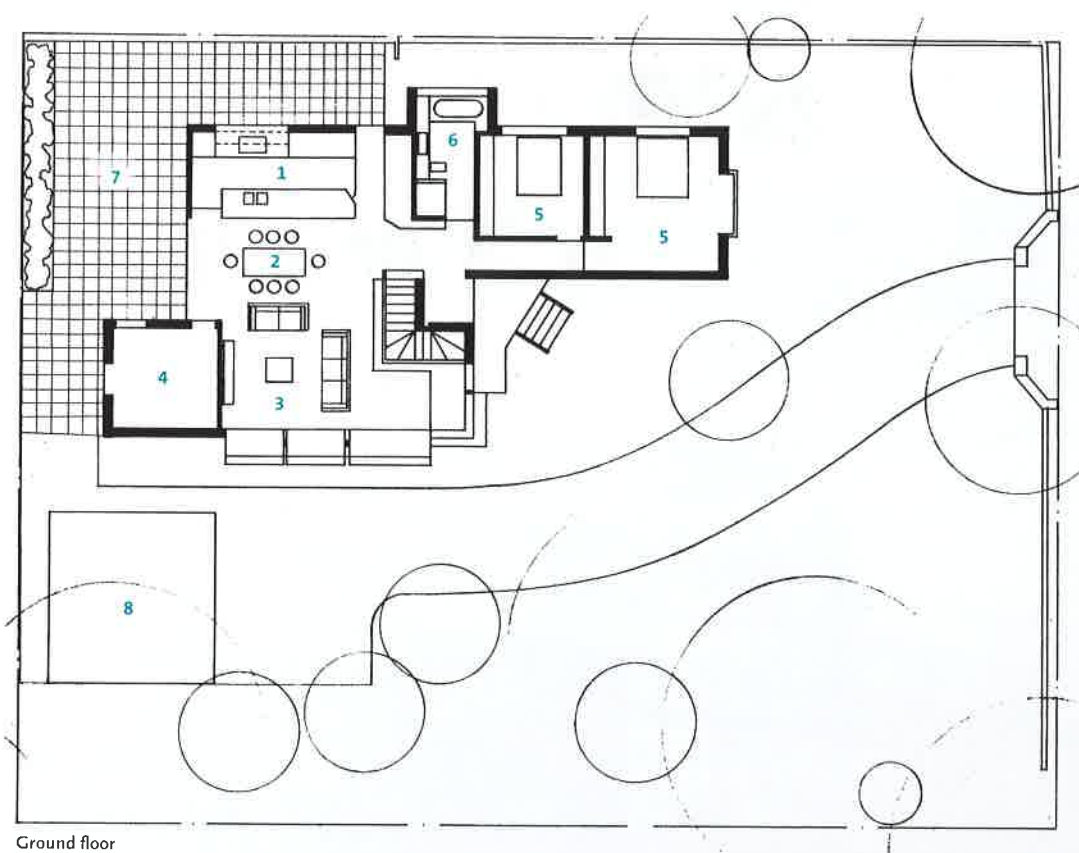
The new stair, made with 10-millimetre steel folded plate, has a resin finish to the threads. The stair rests on a concrete plinth, which continues to create a day bed to the eastern corner of the living room area. The central core of the stair is clad in a rich dark timber veneer, which balances the starkness of the steel.

The kitchen is raised above the main floor by a step, and the floor treatment changes from timber to white resin flooring.









- 1 Kitchen
- 2 Dining room
- 3 Living room
- 4 Study
- 5 Bedroom
- 6 Bathroom
- 7 Deck
- 8 Garage

0 4m

Ground floor





